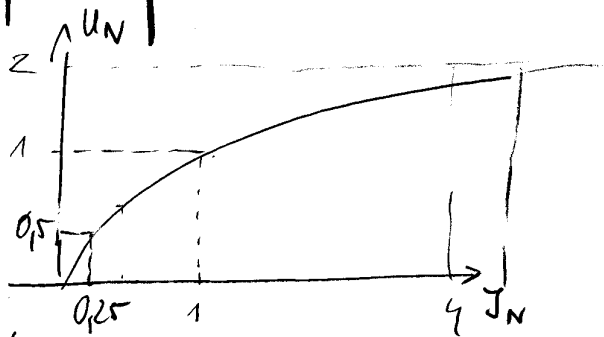
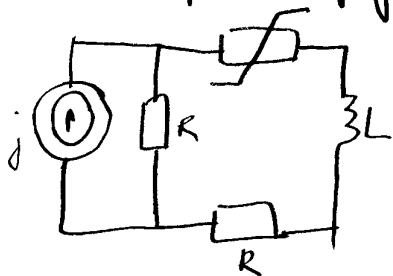


Ład.

Obliczyć prąd przynajmniej

przez opornik nieliniowy



$$j = j_0 + j_m \cos(2t)$$

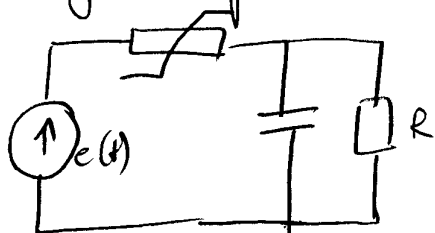
$$R = 1 \quad L = 1$$

$$j_0 = 10 \quad j_m = 1$$

Ład

Obliczyć napięcie

na kondensatorze



$$e(t) = 2 + 0,1 \cos(2t)$$

$$R = 1, \quad C = 1$$

